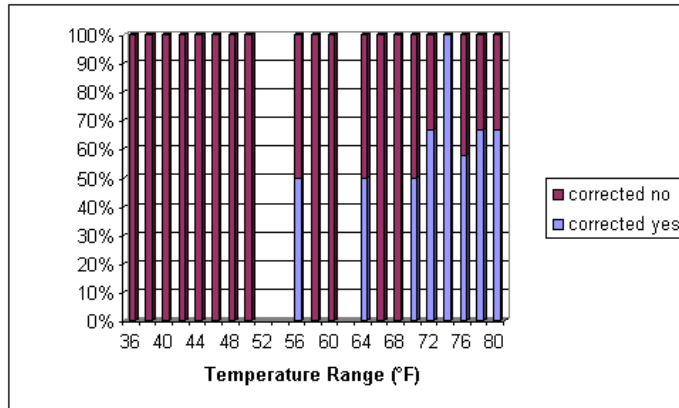


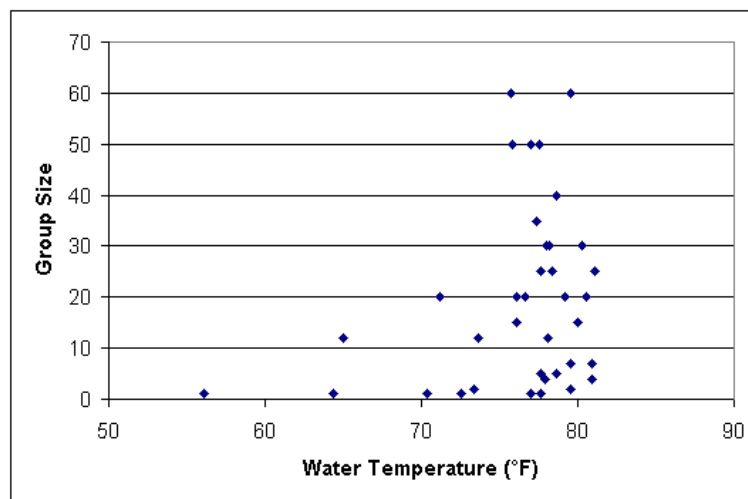


Probability of Sightings vs. Temperature



This is the graph showing the normalized data for the probability of sighting vs. temperature. 92.3% of the sightings were made from SST within the range of 70°F - 80°F.

Observed Group Size In Relation to Temperature



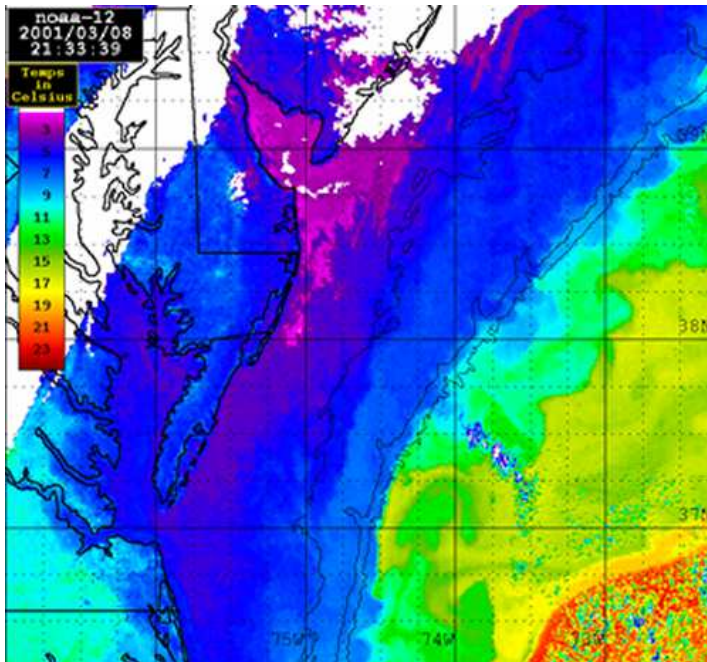
This graph shows the size of the groups in relation to water temperature. 98.1% of the dolphins sighted were within the range of 70°F - 80°F.

Chlorophyll Level vs. Occurrence

Chlor-al	# yes	# no
Low	0	0
Med. Low	1	0
Medium	2	1
Med. High	2	4
High	0	2

Due to the small sample size there was no significant correlation found between chlorophyll levels and presence or absence of dolphins.

This set of data indicates that SST may be a better Remote Sensing variable than chlorophyll level for inshore population; however, further evidence is needed to confirm this theory.



Sea Surface Temperature
from AVHRR.

Phytoplankton Concentration
yielding the presence of
Chlorophyll levels
from AVHRR.

