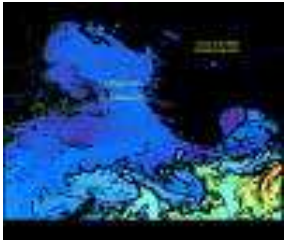
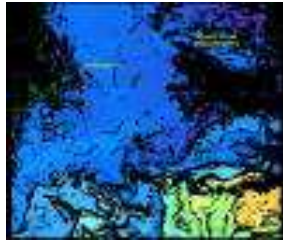


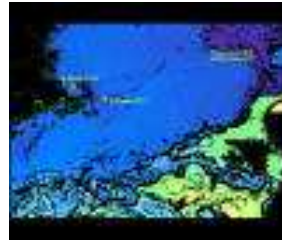
## Sea Surface Temperature



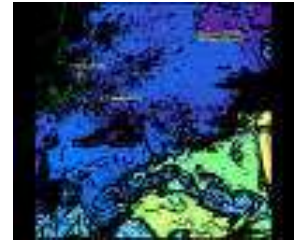
March 23, 2003



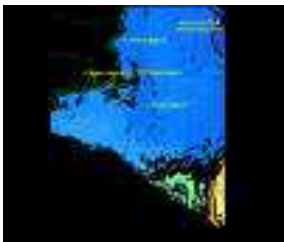
March 28, 2003



April 14, 2003



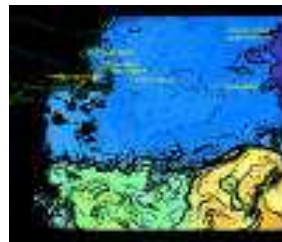
April 15, 2003



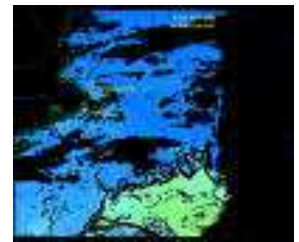
April 25, 2003



April 27, 2003

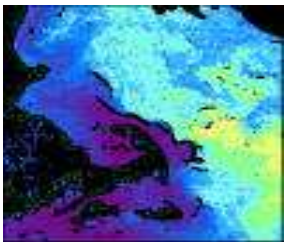


April 28, 2003

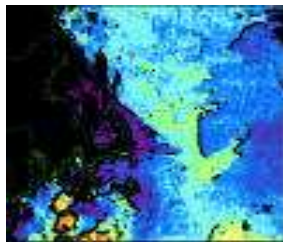


April 30, 2003

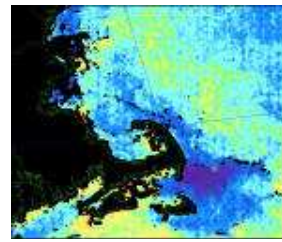
## Enhanced Sea Surface Temperature



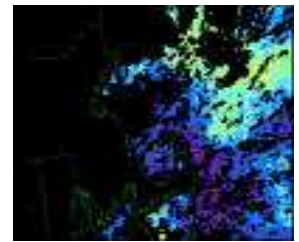
March 23, 2003



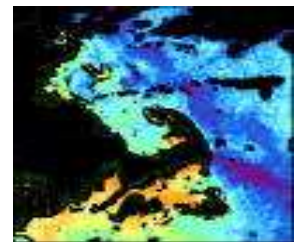
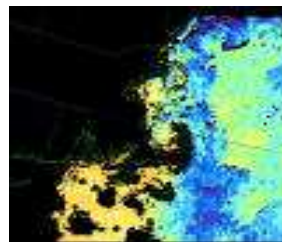
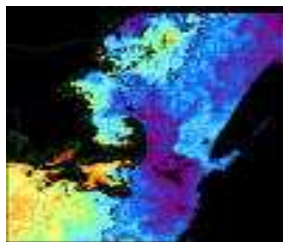
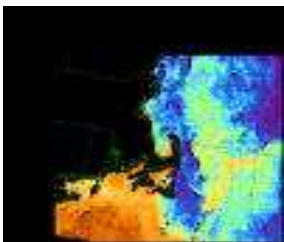
March 28, 2003



April 14, 2003



April 15, 2003

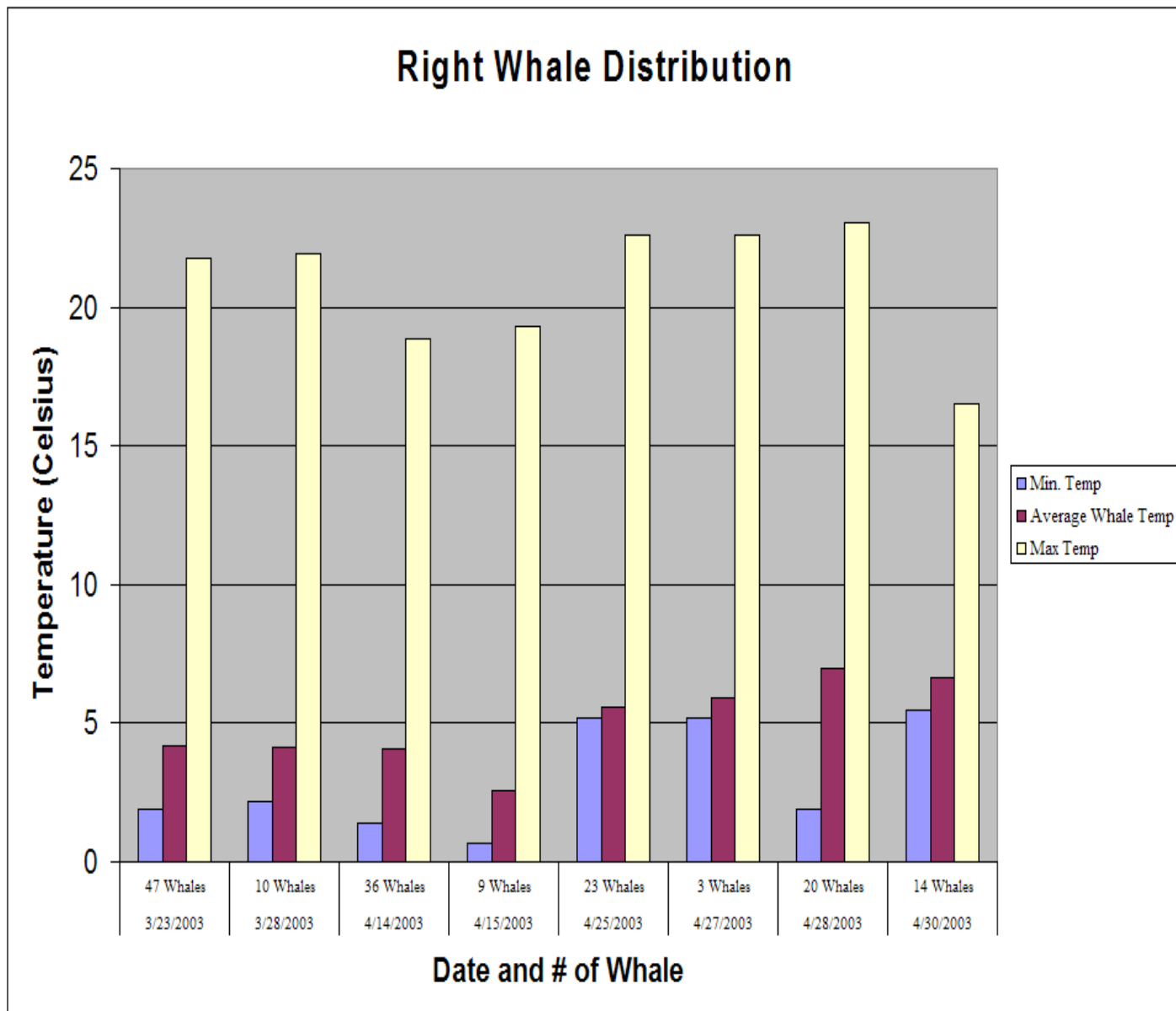


| April 25, 2003

| April 27, 2003

| April 28, 2003

| April 30, 2003



#### Results:

- We were only able to collect eight good images from the archived data.
- Whales appeared clumped more in March than April.
- Right whales tend to be in cold water but not the coldest water.
- Right whales are definitely not in warmest water.
- Water tends to be warmer in Cape Cod Bay than in the Great South Channel.
- Right whales may have migrated in to Cape Cod Bay as the water temperature rose.
- Right whales may be searching for thermal boundaries when outside of Cape Cod Bay.

#### Conclusion:

- It may be possible to predict right whale distribution based on oceanographic characteristics.

#### Future Research:

- By examining phytoplankton data, the chlorophyll concentration may provide a better comparison.
- Analyzing more sea surface temperature images provide us with an in-depth quantitative analysis.
- Developing a better understanding of copepod distribution will aid the process in predicting right whale distribution.

<a href="#">Home</a>	<a href="#">Background</a>	<a href="#">Members</a>	<a href="#">Abstract</a>	<a href="#">Results</a>	<a href="#">Photos</a>	<a href="#">Links</a>
----------------------	----------------------------	-------------------------	--------------------------	-------------------------	------------------------	-----------------------